

## **ACCIDENT**

### ***involving the glider registered D-KKDD***

D-KKDD OF 19 JULY 1999

<b>Event:</b>	Collision with ground during final turn.
<b>Probable cause:</b>	Excessive height during aerodrome circuit leading to a tight final turn.

<b>Consequences and damage:</b>	Pilot injured, glider severely damaged.
<b>Type of aircraft:</b>	Schleicher ASW 20 L Top, single-seat glider.
<b>Date and time:</b>	Monday 19 July 1999 at 16 h 05.
<b>Owner:</b>	Private.
<b>Place:</b>	Blois AD (41).
<b>Type of flight:</b>	Local.
<b>Persons on board:</b>	Pilot.
<b>Licenses and experience:</b>	Pilot, 20, VV issued by Germany in 1997, 154 flying hours of which 12 h 30 on type and 17 in the previous 3 months.
<b>Meteorological conditions:</b>	Estimated at the site: wind 220°/10 to 20 kt, visibility over 10 km, scattered Cu towards 5200 ft, temperature 27 °C, humidity 43%, QNH 1014 hPa.

### **Circumstances**

Returning from a local flight, the pilot arrived at the right downwind leg intending to land on runway 21. A witness on the ground stated that this phase of the aerodrome circuit was performed at a suitable height but closer to the terrain than the track usually followed by gliders.

Examination of the site and the wreckage showed that the aircraft came to rest east of the runway 21 final centreline after having pivoted 140 degrees and that the left wing touched the ground first.

The accident appears to have resulted from a loss of control on the final turn after the aircraft had passed the approach extended centreline for runway 21. An aerological phenomenon or inappropriate flying technique may have led to the loss of control.

# ATTERRISSAGE A VUE Visual landing

Ouvert à la CAP  
Public Air Traffic

01 BLOIS LE BREUIL LFOQ

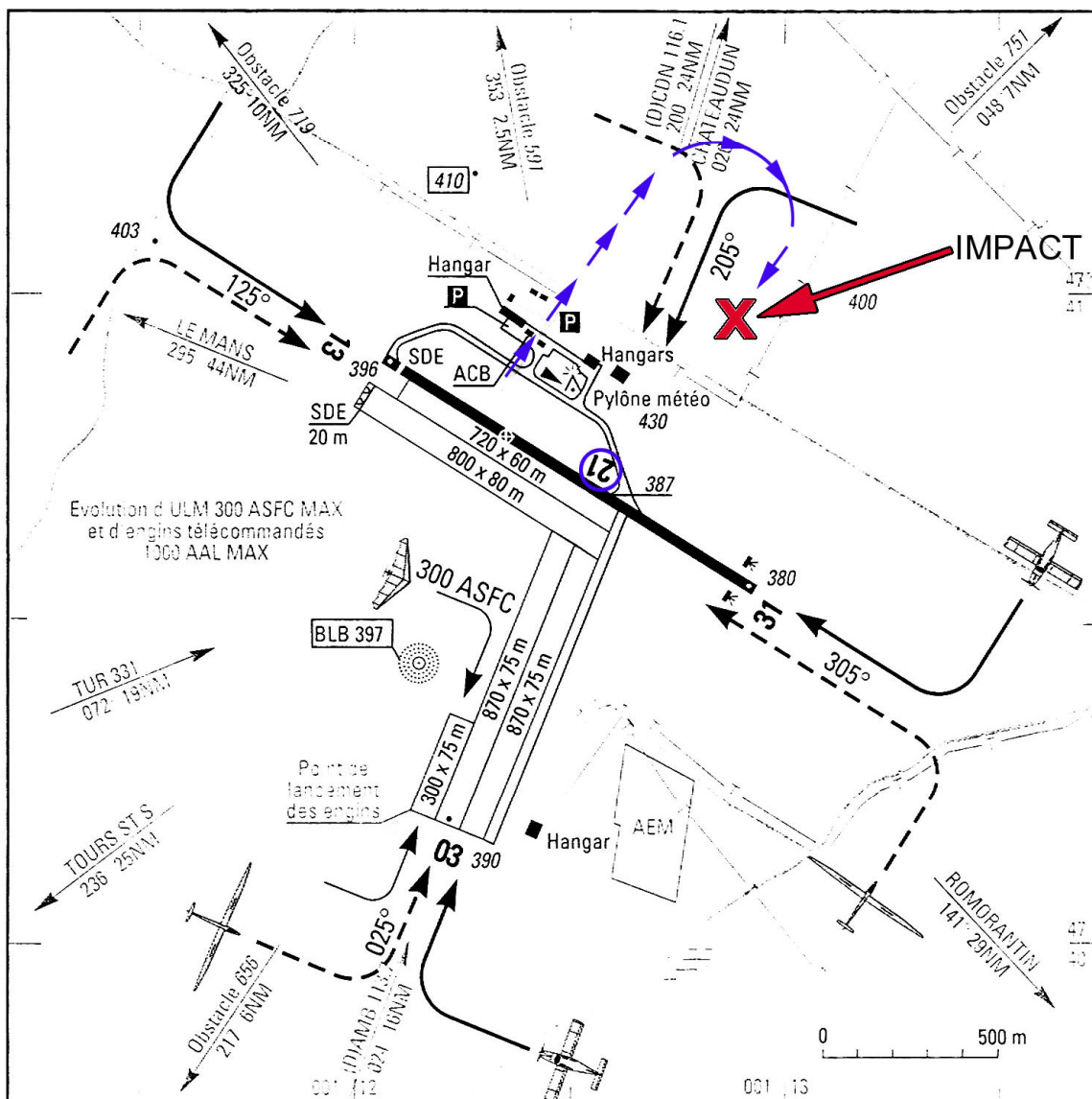
98 06 18

Coord .WGS-84  
ALT en ft  
ALT AD : 397 (15 hPa)



LAT : 47 40 47 N  
LONG : 001 12 21 E  
DÉC : 3° W (95)

APP : NIL  
TWR : NIL  
AFIS : BLOIS Information 118.1. A/A en FR seulement



RWY	QFU	Dimensions Dimension	Nature Surface	Résistance Strength	TODA	ASDA	LDA
13 31	125 305	1250 x 30	revêtue paved	6 t	1250 1250	1250 1250	1200 1250
Aides lumineuses : RWY 13/31 BI				Lighting aids : LIL RWY 13/31			



AMDT 08/98 CHG : coord.WGS-84.

© SIA

